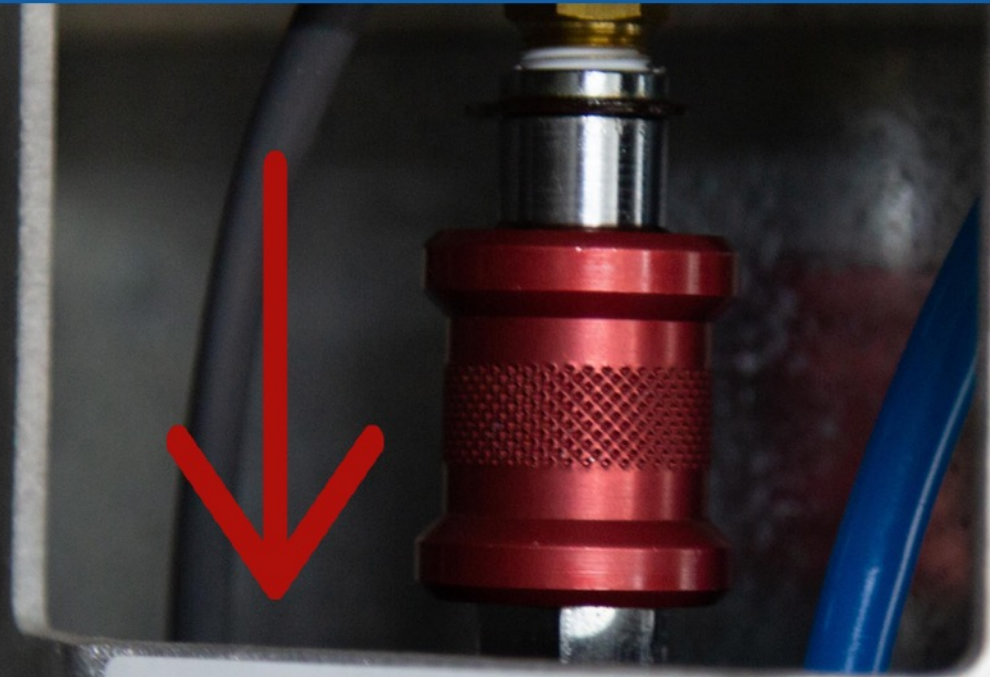

HOW TO ADJUST SIDE DOOR LOCKS

If the side door locks do not engage, or they bind, then the catch plate should be adjusted.

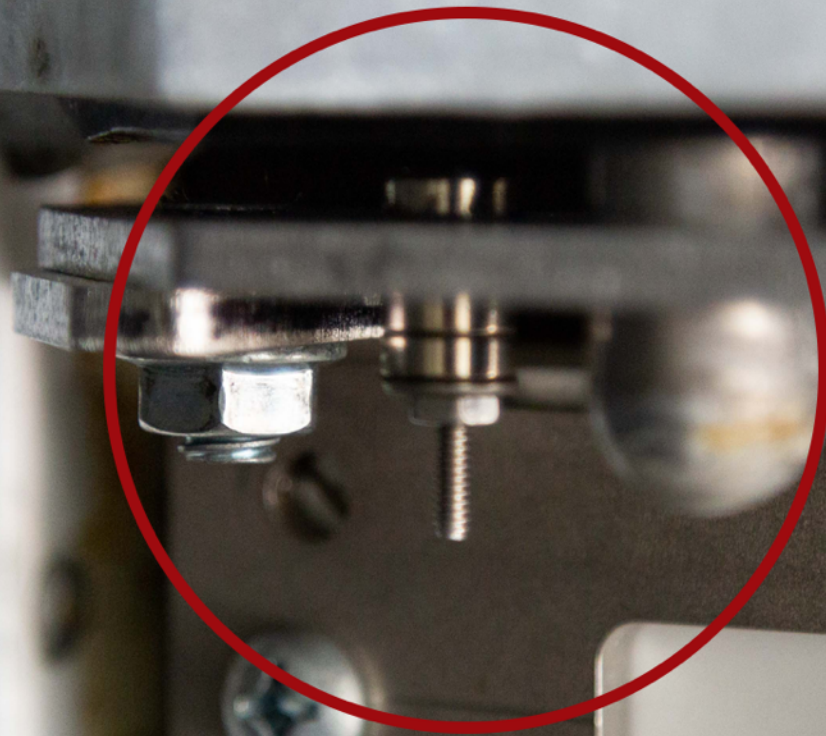
Step 1: Close the side door.



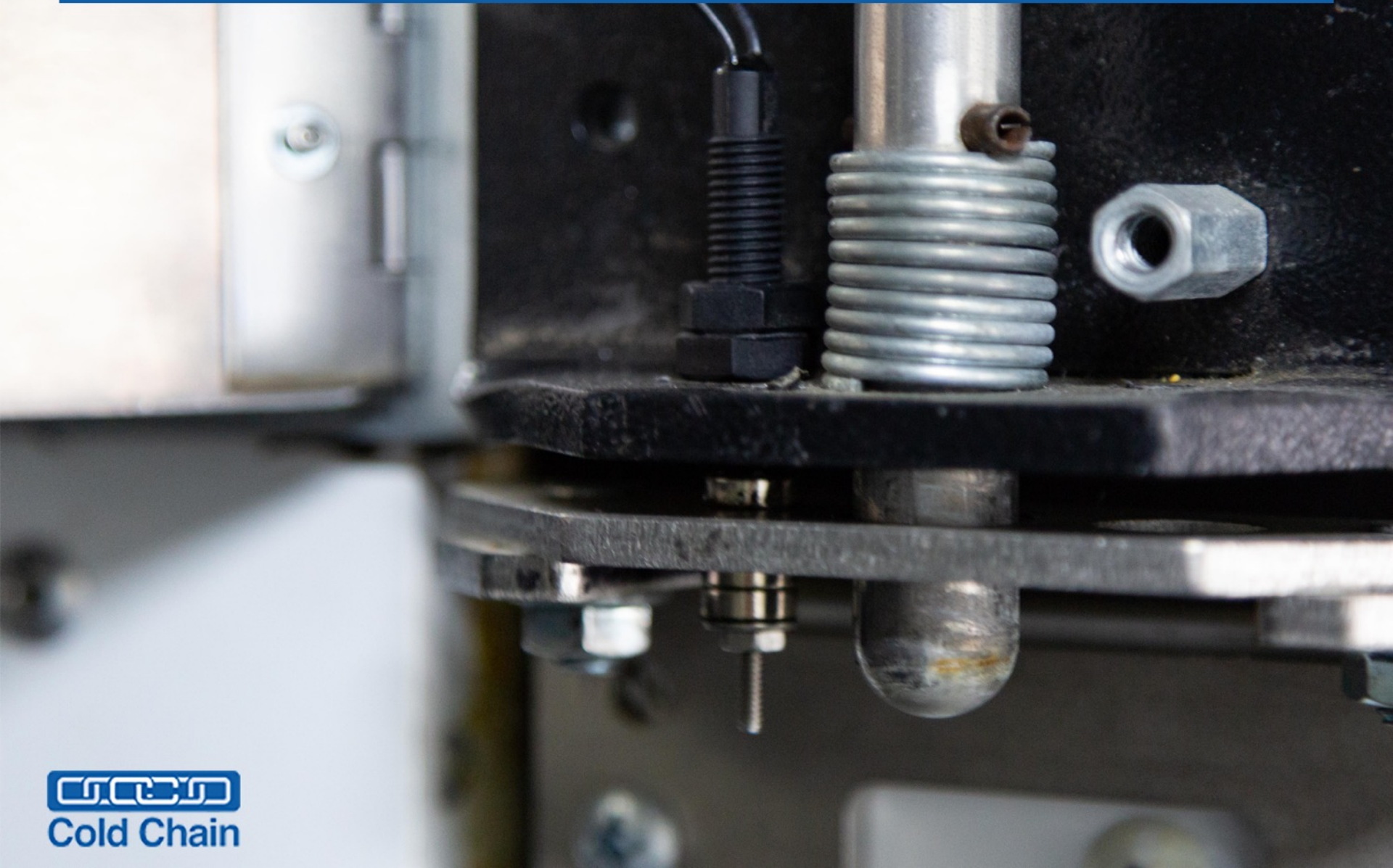
Step 2: Release pressure from the side door lock.



Step 3: Loosen the door catch plate spin lock nut, but do not remove it.



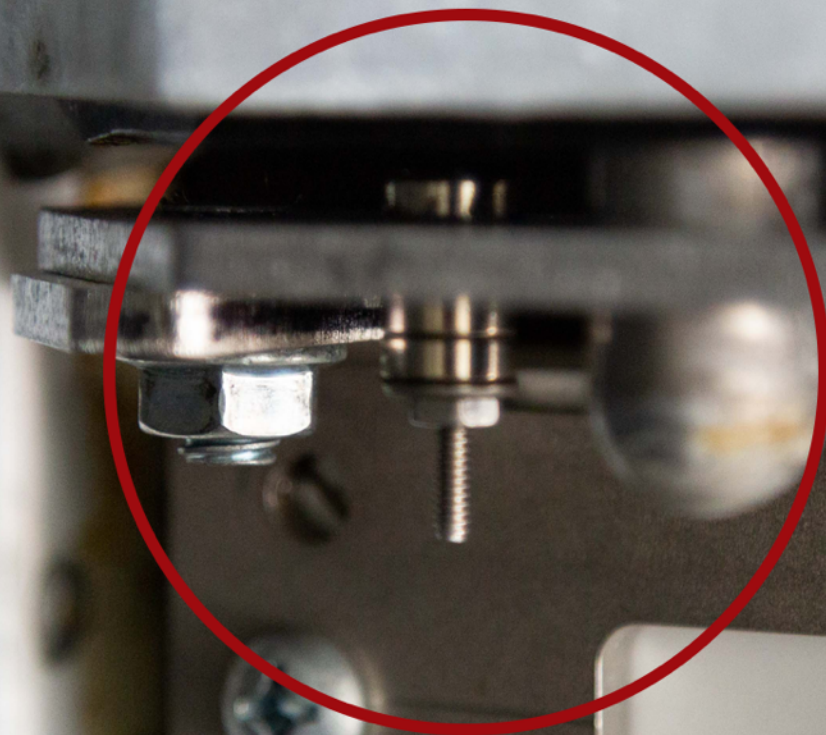
Step 5: Move the plate until the magnet aligns with the reed switch and the pin comes down to lock the door.



Step 6: Continue to adjust the plate position so the pin stays down but so that it is not binding on the catch plate.



Step 7: Tighten the spin lock nuts on the catch plate.



Step 8: Test the operation of the side door lock using the remote.



For more information, contact Cold Chain at
info@coldchainllc.com
